

THE BURNHAMS

FLOWER SHOW, FETE & CARNIVAL

SATURDAY 12TH JULY 2025

Exhibitors Schedule & Entry Forms



CELEBRATING
120 YEARS



A new home is just the beginning

Sowerbys is delighted to support The Burnhams Flower Show, Fete & Carnival. Good luck to all the entrants.

[START YOUR SEARCH SOWERBYS.COM](https://www.sowerbys.com)

SOWERBYS

SALES • LETTINGS • PROPERTY MANAGEMENT • LAND & NEW HOMES



Burnham Market
Dereham
Fakenham
Holt
Hunstanton

King's Lynn
Norwich
Watton
Wells-next-the-Sea

Market Place
Burnham Market
King's Lynn
PE31 8HD
01328 730340

THE BURNHAMS FLOWER SHOW 2025

Welcome to the 120th Burnhams Flower Show, Fete and Carnival. This year, to mark the 120th anniversary of the Show, we are celebrating the Hollyhock, the flower which decorates the Burnhams' gardens, streets and paths in spectacular fashion at this time of year. There is a special category of "Splendid Hollyhocks" in the competitions for this year's show, as illustrated by children from Burnham Market School.

This brochure contains information about all the classes and competitions that are held in the Marquee on the day itself, and in the week beforehand. Anyone and everyone can enter - please do, you don't have to be an expert. You can enter as few or as many classes as you wish (with a maximum of 2 entries in each class).

There is a fee of 20p per entry, entries to the children's competitions are free. The entry forms, on pages 17-18, can be copied or downloaded from our website (www.burnhamsflowershow.co.uk), and handed in to Burnham Market Post Office, Burnham Market Garage or Burnham Market Stores, or sent by post to the Show Secretary, Diana Black, 6 The Pightle, Burnham Thorpe PE31 8HT. Please make your entries by 1pm Friday 12th July. They can be made on the day at an increased rate of 40p per entry, but it makes our lives easier if you can enter in advance!

If you have any queries relating to the competition, please check the Instructions & Tips section on page 9.

Please have a go, enjoy and good luck!

THANK YOU!

TO ALL THE LOCAL BUSINESSES WHO HAVE ADVERTISED IN THE SCHEDULE, SPONSORED THE COMPETITIONS AND EVENTS AND SUPPORTED US SO GENEROUSLY

Sowerbys * Fakenham Garden Centre * Dempsey Heating * Gurneys
Tuscan Farm Shop * Trevor Manning * Humble Pie * GJL Animal Foods
Emma's Court * Norfolk Hideaways * Burnham Market Stores * Tillys
Burnham Market Garage * Burnham Market Post Office * Betty's Club
Hamilton Antiques * BB Textiles * Pentney House * Barefoot Living
Brian Rix Ltd. * Howells Butchers * Satchells * Bedfords
Urban Armour * Clothesline * Lime Green * Gun Hill Clothing Co Ltd
Wensum Pools * Whitehall Farm B&B * Burnham Tea Rooms * Norfolk Saffron
Sowerbys Holiday Cottages * Norfolk Pallet Service * Burn Valley Vineyard

Thank you to the children from Burnham Market School for their wonderful drawings.

Programme design and printing www.saintdesigns.co.uk

Thank you to all individuals for their generous donations.

FLOWERS POT PLANTS FRUIT AND VEGETABLES

All flowers and vegetables in this section must have been grown by the person exhibiting. Pot plants, if purchased, must have been "grown on" by the exhibitor and been in their possession for at least 6 months.

CUT FLOWERS

sponsor Hamilton Antiques & Fakenham Garden Centre

- 1 A gent's buttonhole (tied & can be placed in water)
- 2 A lady's buttonhole (tied & can be placed in water)
- 3 Four sprays of floribunda roses
- 4 One hybrid tea rose
- 5 Vase of four roses
- 6 Best bowl of roses (Winner will also be awarded the Tom Tweed cup see page 9)
- 7 Five pinks
- 8 Four kinds of cut flowers, shown in separate containers
- 9 Vase of ten sweet peas
- 10 3 stems of any flower (the same variety) in a vase
- 11 Best bowl of flowers
- 12 A vase of your favourite bloom(s)

POT PLANTS

sponsor Clothesline & Fakenham Garden Centre

- 13 One pot plant (foliage)
- 14 One pot plant (flowering)
- 15 One cactus or cacti in a pot
- 16 One succulent(s) in a pot
- 17 One orchid in a pot
- 18 A favourite pot plant or plants.
- 19 A patio container

SOFT FRUIT

sponsor Burn Valley Vineyard & Fakenham Garden Centre

- 20 Dish of redcurrants on stalks, ten stalks
- 21 Dish of blackcurrants on stalks, ten stalks
- 22 Ten raspberries with stalks
- 23 Ten green or yellow gooseberries
- 24 Ten red gooseberries
- 25 Three soft fruits, shown separately, ten of each
- 26 Any fruit or fruits not mentioned above

Brian Rix Ltd

Building Contractors

Established 1981

- **New Builds** - **Renovations** -
- **Extensions** - **Conversions** -



01328 738786

info@brianrix-builders.co.uk

Red House, Church Walk
Burnham Market PE31 8DH

www.brianrix-builders.co.uk

VEGETABLES

sponsor Gun Hill Clothing, Betty's Club & Fakenham Garden Centre

- 27 Collection of 5 vegetables on a tray
- 28 A vegetable, fruit or flower grown by a person living with dementia or cognitive decline **B**
- 29 Heaviest onion with top as grown
- 30 Three courgettes
- 31 Five white potatoes – any type
- 32 Five coloured potatoes – any type
- 33 Ten pods of peas
- 34 Ten pods of broad beans
- 35 Ten pods of French beans
- 36 Five carrots with tops – any type
- 37 Ten dressed shallots
- 38 Five onions with tops as grown (not peeled)
- 39 Five beetroot with tops
- 40 Two cucumbers
- 41 Two cabbages with stalks
- 42 Five radishes with tops on a plate
- 43 Two lettuces
- 44 Five tomatoes (any colour)
- 45 Three bulbs of garlic
- 46 Collection of five pieces of salad on a tray
- 47 Any other vegetable(s)
- 48 A mutant or rude vegetable
- 49 Potato in a Bucket *
- 50 Potato in a bucket * grown by a person living with dementia or cognitive decline **B**

*Buckets should be no more than 10 litres in volume - please bring the whole bucket with the potato growing in it.

The Douglas Webdale cup (see page 9) will be awarded to the person scoring the most points in the vegetable section.



BETTY'S CLUB

Betty's Club is an important new community resource next door to the Burnhams Surgery.

The purpose-built space and sensory garden were designed especially for local older people with dementia or cognitive decline and their family carers. Our vision is to become a vibrant, community-led members club offering a range of free, regular enjoyable activities chosen by members to enhance their wellbeing, because every person with dementia or cognitive decline has a better life when they have meaningful things to do.

Trained volunteers offer life storytelling, table and brain games, arts and crafts, writing and poetry, reminiscence, music, chair exercise and 'tiny allotment' gardening to our members, along with learning workshops and counselling.

Why not visit the club and consider joining us – we look forward to welcoming you!

Phone 07976 287952

GARDEN, ALLOTMENTS & OTHER COMPETITIONS

sponsor Brian Rix Ltd

*See also Children's Section,
Gardening on page 8*

*Entries for classes 51 to 56 must
come from no further than 6 miles
from Burnham Market.*

51 GARDEN OR ALLOTMENT
(1st £25 & the Burnhams Landscape
Cup, 2nd £20, 3rd £15)

52 A REWILDED SPACE
(1st £20, 2nd £15, 3rd £10)

53 SPLENDID HOLLYHOCKS
(1st £20, 2nd £15, 3rd £10)
A splendid stand of hollyhocks, or

an area featuring hollyhocks. These
will be judged in the place where
they grow.

54 HANGING BASKET
(1st £15, 2nd £10, 3rd £5)

55 TALLEST SUNFLOWER
(1st £15, 2nd £10, 3rd £5)

56 A SCARECROW
(1st £15, 2nd £10, 3rd £5)

*Please make your entries for gardens,
allotments, rewilded space,
hollyhocks, hanging baskets and
scarecrows at least one week prior to
the show date. Please contact Diana
Black on 01328 730778 to arrange a
time for the judges to visit.*



Urban Armour & BB Textiles
are delighted to support the
Burnhams Flower Show & Carnival



PHOTOGRAPHY

sponsor Trevor Manning

- 57 Village vibes
- 58 Colour in natures (winner to be awarded the Eileen Sibson cup, p.9)
- 59 Joy
- 60 Free choice

Photographs may be in colour or black & white, size 7"x5", and NOT framed or mounted. Each class has a sub-section for 16 yrs and under.

FLOWER ARRANGING

sponsor Lime Green

- 61 A vegetable bouquet, wrapped in paper
- 62 An arrangement in one colour only
- 63 An arrangement of herbs & weeds
- 64 An arrangement in an unusual container
- 65 An arrangement inspired by a

song or piece of music (please include title)

- 66 A petite arrangement, not to exceed 6" in any direction

Flowers and foliage etc used may be obtained from any (legal) source.

COOKERY

sponsor Humble Pie & Norfolk Living

- 67 A vegetable cake
- 68 5 chocolate brownies
- 69 5 cheese scones
- 70 5 cupcakes, decorated to celebrate 120 years of the Flower Show
- 71 A loaf of soda bread
- 72 A Swiss roll (using recipe on page 14)
- 73 A sweet or savoury vegan treat
- 74 1 jar of jam/jelly
- 75 1 jar of marmalade
- 76 1 jar of chutney

HOMEMADE WINE & DRINK

sponsor Satchells of Burnham Market

- 77 A bottle of homemade wine (still or sparkling)
- 78 A fruit liqueur (eg sloe gin, plum rum etc)
- 79 A bottle of lemonade
- 80 A bottle of homemade fruit cordial (eg elderflower, blackcurrant)
- 81 A bottle of homemade beer

Children are welcome to enter these sections too, and the Audrey Mahon Cup will be awarded to the person aged 16 or under scoring the most points (see page 9)

HANDICRAFT

sponsor Dempseys Heating Ltd

- 82 A piece of jewellery
- 83 A greetings card in any medium
- 84 A knitted item
- 85 A crocheted item
- 86 A sewn item
- 87 An item made from hard material (eg wood, metalwork, stained glass etc)
- 88 An embroidery or cross stitch picture or sampler (own design)
- 89 An embroidery or cross stitch picture or sampler (from a kit)
- 90 A picture or drawing (framed or unframed)
- 91 A work in progress (any material)

92 an item that you have repaired or mended * *New this year*

93 Any other piece of handicraft not mentioned above

Items in Section E should not have been exhibited previously at this show

Children are welcome to enter this section too and the Ivie Garfitt Cup, (see page 9) will be awarded to the best exhibit made by someone aged 16 or under.



**HEATING & PLUMBING SPECIALISTS • GAS & OIL HEATING
BOILER SERVICING • BATHROOM & KITCHEN DESIGN AND
INSTALLATION • AIR SOURCE HEAT PUMPS**

Your Local Experts - Great Service - Competitive Prices

Contact us today!

Honeywell

Vaillant

AQUALISA

VIESMANN

WARMFLOW

GRANT

glow worm
Keeping Britain Warm

01328 862189

www.dempseyheating.com

George Edwards Road, Industrial Estate, Fakenham, NR21 8NL

CHILDREN

The prizes for this section are 1st – £2.50, 2nd – £2, 3rd – £1.50

A PICTURE

**sponsor Gurneys & Whitehall
Farm B&B**

This year, all age groups have been given the title 'Nature' any medium may be used. The age groups are as follows:

- 94 Nursery (2–3 yrs)
- 95 Nursery (3–4 yrs)
- 96 Year R (4–5 yrs)
- 97 Year 1 (5–6 yrs)
- 98 Year 2 (6–7 yrs)
- 99 Year 3 (7–8 yrs)
- 100 Year 4 (8–9 yrs)
- 101 Year 5 (9–10 yrs)
- 102 Year 6 (10–11 yrs)
- 103 12–16yrs

HANDICRAFT

sponsor Dempseys Heating Ltd

- 104 Something made from Lego (your own design) maximum size 20cm x 20cm
- 105 A transformed toilet roll tube
- 106 A creature made from fruit or vegetables
- 107 A song or funny rhyme, written in your best handwriting (no bigger than A5)

- 108 A flower arrangement in an unusual container
- Each class will be judged in 3 age groups, 5–7, 8–11, 12–14 yrs

COOKERY

sponsor Tillys

- 109 3 fruit kebabs (3–5 yrs)
- 110 3 chocolate crispy cakes (6–9 yrs)
- 111 3 fairy cakes (10–14 yrs).

GARDENING

sponsor Norfolk Saffron

- 112 Something I have grown (vegetables)
- 113 Something I have grown (flowers or pot plant)
- 114 A potato in a bucket (1st £10, 2nd £5, 3rd £3)
Bucket should not be more than 10 litres in volume – bring the whole bucket with the potato growing in it.
- 115 Garden (1st prize £20, 2nd £15, 3rd £10)
- 116 Tallest sunflower (1st prize £15, 2nd £10, 3rd £5)
- 117 A Scarecrow (1st prize £15, 2nd prize £10, 3rd prize £5)

Classes 115, 116 & 117 will be judged during the week before the show; and can be no further than 6 miles from Burnham Market, please phone Diana Black on 01328 730778 to arrange a time for the judges to visit.

INSTRUCTIONS FOR EXHIBITORS

ENTRIES

Please hand in completed entry forms and fees to Burnham Market Post Office, Burnham Market Garage or Burnham Market Stores, by 1pm on Friday July 11th. Entries will be accepted on the day (until 9.30am), but at an increased entry fee of 40p for adults and 20p for children.

ON THE DAY

The marquee will be open to receive entries from **8am**. Please report to the Committee table in the marquee on arrival, to be booked in and receive your exhibit cards. Exhibits must then be arranged and displayed in the appropriate section of the marquee.

JUDGING

All exhibits must be in place by **10am**. Judging will start at **10.15am**

REMOVAL OF EXHIBITS & AUCTION

Exhibits must remain in place until **4.30pm**, so that they can be seen and enjoyed by as many people as possible. After this time they can be removed or left in place and donated to the auction, which will take place at approximately **4.45pm** in the marquee.

PRIZES

The prize giving for the main trophies will take place in the arena at approximately **4.15pm**. Cash prizes for the individual classes can be collected from the Committee table between 4.30 – 5pm, by presenting the winning exhibit cards.

CUPS

Cups and trophies are awarded to overall winners in each section. There are a number of additional awards in memory of local people who have been closely involved with the show.

Flowers, Pot plants, Fruit & vegetables: 1st £30 2nd £20 3rd £10, Reg Baldry Cup (best exhibit in Section A from a Burnhams resident) £10, Tom Tweed Cup £10, Douglas Webdale Cup (most points in vegetable section £10) Best garden 1st £25 2nd £20 3rd £15, Best hanging basket 1st £15 2nd £10 3rd £5, Best scarecrow 1st £15 2nd £10 3rd £5

Photography: Adult £20, 16 and under £20, Eileen Sibson trophy £10

Flower Arranging: £20

Cookery: £20, Audrey Mahon cup £10, Homemade wine & drinks £20

Handicraft: £20, Ivie Garfitt Cup £10

Childrens: 1st £20, 2nd £15, 3rd £10

Best in Show: Pentney House Cup

THE BURNHAMS HORTICULTURAL SOCIETY OFFICERS

President: Cindy Stimpson

Chairman: Tony Rout

Secretary: Diana Black

Treasurer: Judith Rout

Members:

Shirley Willsher
Caroline Stuckey
Jamie Rout
Annette Lowe
Doug Codman

Jane Skeet
Ann Smith
Sarah Reed
Dawn Booth
Kate Haywood
Lorraine Raisbury

TIPS FOR EXHIBITORS

The first and most important thing, is that exhibiting should be a fun experience open to anyone, so please have a go. Here are some tips to help you;

VEGETABLES

Remember, biggest is not always best (except for class 29!).

Your veg should be of equal size, free from blemishes, no pest or disease damage, displayed evenly, clean from soil, and fresh not limp (covering with a damp tea towel helps).

FLOWERS & PLANTS

Flowers should be displayed nicely in a vase of clean water. Flowers/plants should be free from any damage from insects, disease and weather.

If you have a few damaged petals or leaves you can remove some, but do not over do it. Remember, if a class says five of something, please put in five, not four or six!

COOKERY

Marks are awarded for appearance and flavour. If more than 1 is specified, they should be even in shape, size and colour.

For jams and preserves, jars and lids should show no sign of ageing, the labels should be clear and well put on and include the date it was made. Wax discs are needed when using cellophane, but not screw top lids. Jars should be filled to the top, to allow for shrinkage.

Any queries regarding entries, please call Diana Black 01328 730778.

Burnhams Tea Rooms & Cafe

For morning coffee,
light lunches
traditional afternoon
teas

*Using the best locally
produced seasonal produce.*

Everything baked
on the premises

TYNE COTTAGE - MARKET PLACE
BURNHAM MARKET

01328 730908

AN EXCITING NEW INITIATIVE FOR LOCAL PEOPLE
WITH DEMENTIA & COGNITIVE DECLINE
& THEIR FAMILIES

B

BETTY'S CLUB

LOTS OF FUN ACTIVITIES, SOCIALISING &

FRIENDSHIP

FOR THE

COMMUNITY

PROVIDING

WELLBEING

AT BURNHAM GARDENS

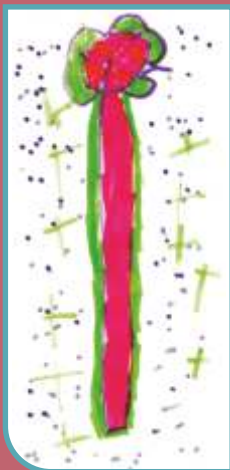
JOIN AS A MEMBER OR VOLUNTEER

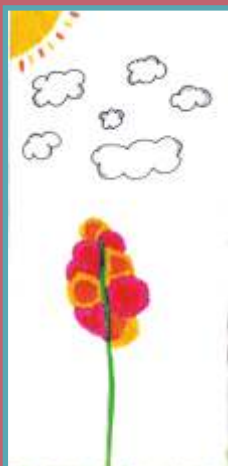
07976 287 952

EMAIL: SARAH.FRED@BETTYSClub.ORG.UK

Charity no. 1191966

BETTY'S CLUB, THE BURNHAM GARDENS, 1 CUCKER ROAD, BURNHAM MARKET, RUSHEN







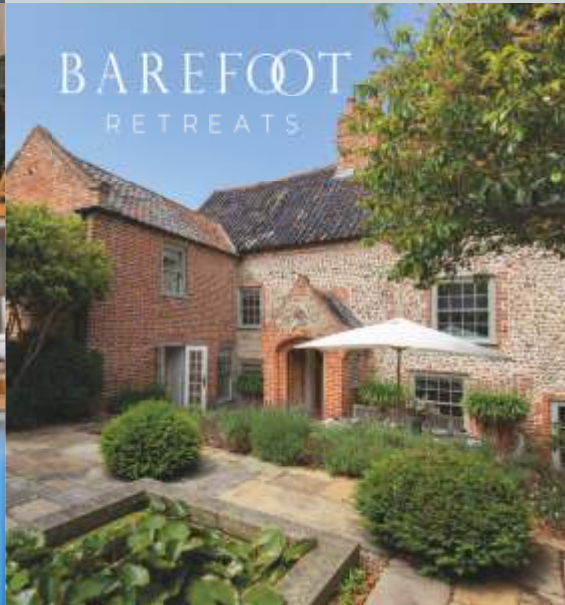
Luxury Boutique Hotel | 8 Unique Bedrooms
| Honesty bar | Secluded Garden |
Sunken Hot Tub
barefootretreats.co.uk
01485 512 245 | Burnham Market



Norfolk Coastal & Rural Holiday Homes
From the cosy and quaint cottages, to the big and the
bold country homes and everything in-between.
simplynorfolkstays.co.uk
01328 730555



Independent Lifestyle Store | Unique
Interiors | Gifts | Fashion
barefoot-living.co.uk
01328 738 100 | 14 North Street
Burnham Market | PE31 8HG



Award winning laid-back luxury
holiday cottages, nestled along the
North Norfolk coastal path.
barefootretreats.co.uk
01485 512 245

CELEBRATING
120 YEARS!



SATURDAY 12TH JULY
7:30 PM

BURNHAM MARKET
PLAYING FIELD
FREE ENTRY AND LICENSED BAR
HAPPY HOUR 7.30 TIL 8.30

SWISS ROLL

Ingredients

4 size 3 eggs (separated), 115g caster sugar, 115g plain flour, 1 tsp baking powder.

Method: grease a 33x23cm shallow tin, line with baking paper, and grease the paper. Heat oven to 180 degrees.

Sift together flour and baking powder.

Whisk egg whites until stiff. Beat in 2 tbsp of the sugar.

Place the egg yolks, remaining sugar and 1 tbsp water in a bowl, beat for about 3 minutes until the mixture is pale and leaves a thick trail when the beaters are lifted.

Carefully fold egg yolk mixture into egg whites. Then fold flour mixture into egg mixture.

Pour cake mixture into tin, smooth surface gently.

Bake in the centre of the oven for 12-15 minutes until springy.

Turn cake out onto piece of greaseproof paper sprinkled lightly with caster sugar. Peel off lining paper, cut off any crisp edges, spread with jam, and roll up. Cool on wire rack.

GJL ANIMAL FEEDS LTD



**CLIPBUSH BUSINESS PARK
FAKENHAM NR21 8SX**
Find us on Facebook & follow us on Twitter for all the latest offers & news

Call now for me to come & deliver to your door, stable, farm or paddock!


01328 851351



**office@gjlanimalfeeds.co.uk
www.gjlanimalfeeds.co.uk**

Award Winning
FARMHOUSE BED & BREAKFAST
AT
WHITEHALL FARM
BURNHAM THORPE

Hosted by Barry and Valerie Southerland



4 STAR GOLD

T: 01328 738 416
M: 07787 551828
www.whitehallfarm-accommodation.com



WENSUM
pools ltd

Jacuzzi

Hot Tubs since 1977

NORFOLK'S LARGEST
AWARD WINNING SWIMMING
POOL AND HOT TUB SHOW SITE

01328 838834

Swaffham Road, South Raynham
Fakenham, Norfolk
NR21 7HN

wensumpools.co.uk | info@wensumpools.co.uk



EMMA'S COURT

BURNHAM MARKET



TILLY'S CAFE
BAREFOOT RETREATS

BOUDICCA DESIGN
MABELS SWEET SHOP



www.emmascourt.com

TEAMS WANTED FOR **5-A-Side Human** **Table Football Tournament!**

To be played on Saturday 12th July
at The Burnhams Flower Show, Fete & Carnival



Matches
from 2.15pm
Finals at 4pm

Cash prizes!!
£50 winners
£25 runners up

Entries to
Jane Skeet
janeskeet007@gmail.com
by Friday 4th July

16's + over £5 per team
Under 16's Free entry

GALA INFORMATION

FOR SATURDAY 12TH JULY 2-5PM - All welcome!

Please dress up and join us on the green in front of Burnham Westgate church at 1.15pm, ready for judging.

FANCY DRESS AND FLOATS

sponsor Norfolk Hideaways

Classes will be judged as follows, with prizes of £20, £15 and £10 per class.

5 years & under; 6–10 years; 11–16 years; Adult

Best decorated pram, buggy, bike, mobility scooter or wheel barrow

£30, £20 & £10

Best decorated float 1st £100 (plus Arthur Howell Cup), 2nd £60, 3rd £40, 4th £20

Best decorated tradesman's vehicle 1st prize £50, 2nd £40, 3rd £30

THE PHOENIX PIPES & DRUMS

sponsor Sowerby's

will lead the parade from the Green at approximately 1.40pm, and arrive at the playing field for 2pm. Upon arrival, prizes will be awarded to the float & fancy dress winners.

Please note that the Society is unable to provide insurance cover for anyone or any vehicles used in the parade.

ACTIVITIES & ENTERTAINMENT **sponsor Barefoot Living**
NEW THIS YEAR! HUMAN TABLE FOOTBALL COMPETITION (SEE ADVERT OPPOSITE)

Events taking place on the field include a further display by the marching band and displays by 1st Academy of Dance, Kings Morris as well as the children's races.

There will also be craft stalls, jewellery workshop, side shows, children's entertainers, the beer tent, teas, Gray's Funfair and much more.

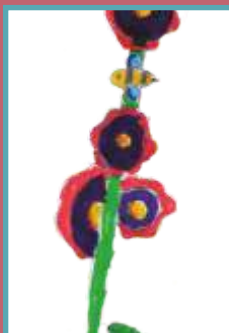
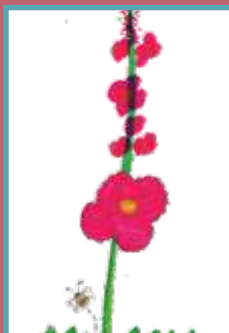
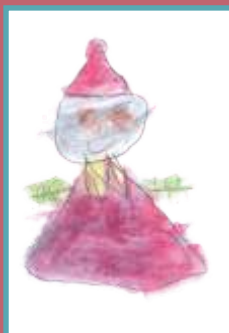
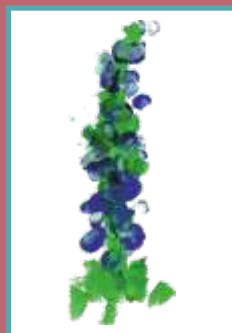
Entry to the field is £2. 12s and under are free.

SORRY, NO DOGS ALLOWED.

MUSIC IN THE MARQUEE - 7.30PM

FEATURING 2ND SUNSET & VEX. FREE ENTRY. LICENCED BAR. HAPPY HOUR 7.30-8.30

As with any event of this nature, circumstances may dictate changes to the planned programme and the committee reserve the right to make amendments at their discretion.



FAKENHAM
GARDEN CENTRE

OPEN 7 DAYS A WEEK
Monday - Saturday 9am - 5.30pm
Sunday 10am - 4pm

Sign up to our **FREE APP**



PREMIUM
PLANTS



PETS &
AQUATICS



COFFEE
SHOP



GIFTS &
HOMEWARES



LANDSCAPE
& DESIGN



DOG FRIENDLY
SITE

Tel: (01328) 863380

www.fakenhamgardencentre.co.uk

email: enquiries@fakenhamgardencentre.co.uk

The Burnhams Horticultural Society Flower Show

ENTRY FORM

Please fill in your name, address, telephone number and the classes you are entering overleaf. Then detach the form and either put your completed form and fees in the special envelope in the Burnham Market Post Office, Burnham Market Garage or Burnham Market Stores or post to:

Diana Black, 6 The Pightle, Burnham Thorpe, PE31 8HT
to arrive no later than Friday 11th July.

Please send 20p per entry - FREE entry for the childrens section

Exhibitors may make no more than two entries per class

Please turn over these entry forms to fill in your name, address, phone number and classes entered (forms may be photocopied)

The Burnhams Horticultural Society Flower Show

ENTRY FORM - PHOTOGRAPHY

Your photographs may be in colour or black & white, size 7"x 5"
BUT NOT FRAMED OR MOUNTED.

This entry form, together with the photographs, must be submitted
BEFORE THE SHOW DAY (to allow time to arrange
on display boards).

There is a 20p entrance fee for each photograph. Please fill in your name, address, telephone number and the number of photographs you are entering overleaf.

Then detach the form and hand your photographs, completed entry form and fees in to the special envelope in Burnham Market Post Office, Burnham Market Garage or Burnham Market Stores, or post to:
Diana Black, 6 The Pightle, Burnham Thorpe, PE31 8HT.

ENTRY FORM

Class(es) entered
.....
Total fee enclosed (20p per entry).
Name
Address
.....
.....
Telephone No:
Children's age if 16 or under for sections D, E & F

ENTRY FORM - Photography

Class(es) entered
.....
Total fee enclosed (20p per entry)
Name
Address
.....
.....
Telephone No: Age (16 or under)
No. of photographs (max two per class)

norfolk hideaways

coastal and country holiday retreats

PROUD
SPONSORS
OF THE
FANCY DRESS
COMPETITION

THINKING OF LETTING YOUR HOLIDAY PROPERTY?

We'll make it easy for you

We know that choosing an agency to let your property can be a big decision. From promoting your property to managing bookings and maintenance, we're here to help to make sure the whole process is stress free.

Competitive commission rate | Excellent occupancy levels
A Marketing or Marketing and Managed service | Professional photography
Peace-of-mind damage cover | No restrictions on the use of your property

So, if you're ready to start sharing your property and earning some extra income, why not get in touch for a chat or ask for a free copy of our **Property Letting Guide?**

01328 887 658 | norfolkhideaways.co.uk

Offices in Burnham Market, Wells-next-the-Sea and Holt





SOWERBYS Holiday Cottages



Discover the place you deserve

An independent, local business with over 25 years' experience
With more than 300 hand-picked, select Norfolk holiday homes,
a stay with Sowerbys Holiday Cottages gives you the chance to
reconnect with what matters most to you.

Looking to let?

Try our fully-managed, flexible service with
fixed rate commission and no hidden extras.

Speak to our team on 01328 730880 today